



INSTALLATION MANUAL
EPISODE ACCESSORIES

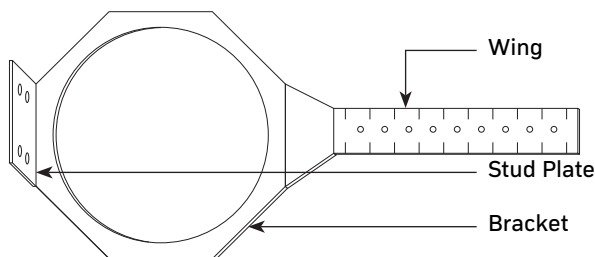
REAL. LIFE. SOUND.



PRE-INSTALL

Pre-Construction Brackets (For Signature Speakers Only)

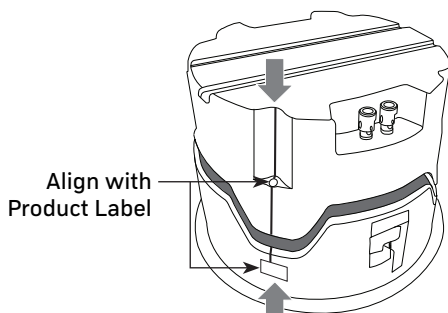
1. Snap the wing into place on the bracket.
- NOTE:** If mounting the speaker to a stud, use the stud plate to secure.
2. Use the 1" markers as a placement guide when securing the bracket. Drive a screw through the holes in the metal wings to secure into the desired position.
 3. Secure wiring within reach of the construction bracket for easy access.



INSTALL

Rear Enclosures (For Signature Speakers Only)

1. Insert the speaker into the appropriate enclosure before mounting.
2. Use the embossed guide to align the enclosure with the product label.
3. Secure enclosure to speaker using the screws provided.
4. Connect wires to the terminals on top of the enclosure.





POST-INSTALL

Grille Options

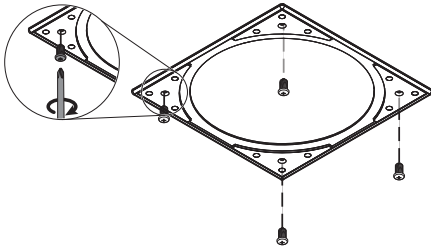
See the chart below for available grille options.

Speaker	In-Ceiling		In-Wall	
Grille	Thin Bezel	Bezel-less	Thin Bezel	Bezel-less
Round	✓	✓		
Rectangular			✓	✓
Square	✓	✓		

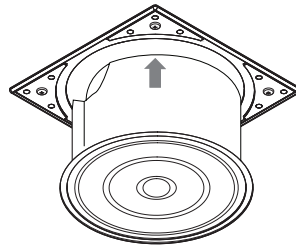
Install

For round in-ceiling and rectangular in-wall grilles, simply attach onto the speaker.

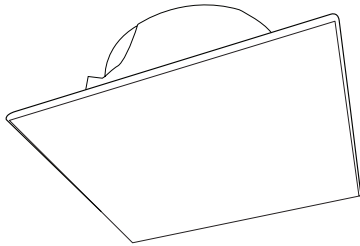
Follow the steps below to attach square grilles.



1. Use 4 #8 Phillips screws (not included) to mount the adapter plate to the desired area in the ceiling.



2. Fit the speaker over the adapter plate.



3. Attach the grille to the adapter plate.

WARRANTY

Lifetime Limited Warranty

Episode® Accessories have a Lifetime Limited Warranty. This warranty includes parts and labor repairs on all components found to be defective in material or workmanship under normal conditions of use. This warranty shall not apply to products which have been abused, modified or disassembled. Products to be repaired under this warranty must be returned to SnapAV or a designated service center with prior notification and an assigned Return Authorization (RA) number.

CONTACTING TECHNICAL SUPPORT

As a thank you for purchasing Episode® products, direct technical support services are available via phone or e-mail. We encourage you to use this resource for any questions or concerns about our products. Visit our website for more support documentation.

(866) 838-5052

techsupport@snapav.com

snapav.com

