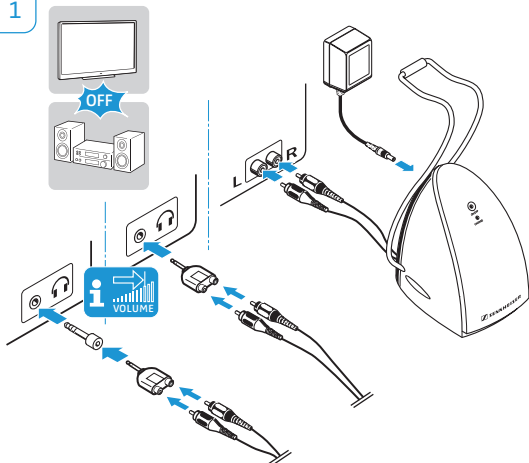


RS 135

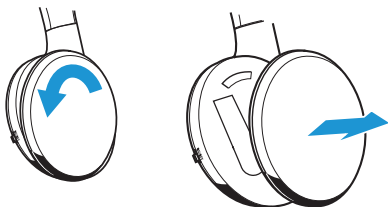


Instruction manual

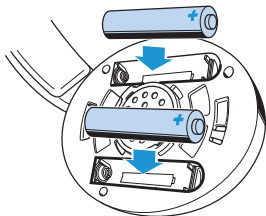
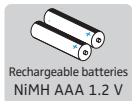
1



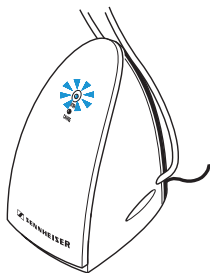
2



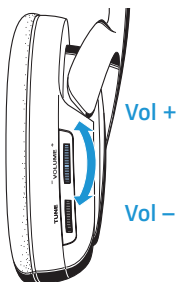
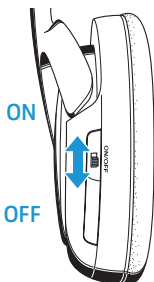
3



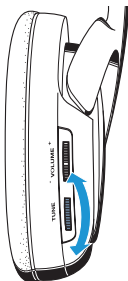
4



5



6



Package contents



HDR 135 headphones



TR 135 transmitter with
audio connection cable



NT9-3A power supply unit (US version)



NiMH rechargeable batteries, AAA size, 1.2 V



Adapter, 2 RCA sockets to 3.5 mm jack plug



Adapter, 1/4" (6.3 mm)



Instruction manual



Safety Guide



The diagrams corresponding to the chapter headings can be found on the fold-out page.

Preparing the transmitter for use

The transmitter is prepared for wall mounting (recess at the rear of the transmitter). The required mounting material (screws and plugs) is not included in the delivery.

1 Connecting the transmitter to an audio output of your audio source

- ▶ Choose a suitable place near your audio source (e.g. TV, stereo or home cinema system). Avoid placing the transmitter close to metal objects such as shelf bars, reinforced concrete walls, etc. as this can decrease the transmitter's range.
- ▶ Connect the transmitter's audio connection cable:
 - directly to the RCA sockets (**outputs**) of your audio source, making sure to connect the red RCA plug to the red RCA socket **R**, or
 - to the supplied RCA/3.5 mm adapter for connection to a 3.5 mm headphone socket, or
 - to the supplied RCA/3.5 mm adapter and 1/4" (6.3 mm) adapter for connection to a 1/4" (6.3 mm) headphone socket.
- ▶ Set the volume for the headphone output of your audio source to a medium level. If the headphone output volume is set too low, the transmitter automatically switches off.

i Some TVs have a function that mutes the TV loudspeakers when you connect a transmitter. If necessary, change this setting via the operating menu of your TV.

Connecting the transmitter to the power supply system

- ▶ Connect the power supply unit to the socket at the rear of the transmitter. Plug the power supply unit into a wall socket. The transmitter switches on and the **ON/OFF** LED lights up green.

Preparing the headphones for use

2 Opening the battery compartments

- ▶ Turn the ear pads in the direction of the arrow until you overcome a slight resistance and lift them off the ear cups.

3 Inserting and replacing the rechargeable batteries



CAUTION

- ▶ Only use NiMH rechargeable batteries, never use standard batteries!
- ▶ Insert the supplied rechargeable batteries. Secure the ear pads to the ear cups.
- ▶ Charge the rechargeable batteries for at least 24 hours prior to first time use. Subsequent charging time depends on the previous operating time and is up to 18 hours max.
- ▶ Place the headphones on the charging cradle of the transmitter. The red **CHARGE** LED lights up, indicating that the batteries are being charged. The **CHARGE** LED remains lit even when the rechargeable batteries are fully charged.

Using the headphone system

4 Switching on the audio source

- ▶ Switch on the audio source. The transmitter automatically switches on and off together with the audio source. The **ON/OFF** LED lights up green.

5 Switching on the headphones/adjusting the volume

- ▶ First, set the volume on the headphones to a low level.
- ▶ Switch on the headphones and set the volume to the desired level.
- ▶ Switch off the headphones after use to avoid discharging the batteries.

6 Optimizing the reception

- ▶ Adjust the receiver channel with the **TUNE** control on the headphones.

However, if reception is subject to interference:

- ▶ Change the transmission channel by setting the switch at the bottom of the transmitter to another position and re-adjust the receiver channel with the **TUNE** control on the headphones. Some electronic devices (e.g. televisions) can cause interference to your wireless headphone system. If this happens, increase the distance between the transmitter and the interference source.

Specifications and additional information

- ▶ Specifications are included on the inside cover page.
- ▶ Visit our website at www.sennheiser.com.



Manufacturer declarations


Warranty

Sennheiser electronic GmbH & Co. KG gives a warranty of 24 months on this product.

For the current warranty conditions, please visit our website at www.sennheiser.com or contact your Sennheiser partner.

Before putting the device into operation, please observe the respective country specific regulations!

Statements regarding FCC and Industry Canada

FCC Declaration of Conformity (DoC)	
 SENNHEISER Model No: RS 135	
We,	Sennheiser Electronic Corporation One Enterprise Drive • Old Lyme • CT 06371 • USA Tel: +1 (860) 434 9190 Fax: +1 (860) 434 1759
declare the above device comply with the requirements of Federal Communications Commission.	
This device complies with Part 15 of the FCC rules. Operation is subjected to the following two conditions:	
1) This device may not cause harmful interference, and	
2) This device must accept any interference received, including interference that may cause undesired operation.	
Responsible Party: Greg Beebe	

This device complies with Part 15 of the FCC rules and RSS-210 of Industry Canada. Operation is subject to the following two conditions: 1) This device may not cause harmful interference, and 2) This device must accept any interference received, including interference that may cause undesired operation.

This equipment has been tested and found to comply with the limits for a Class B digital device, pursuant to part 15 of the FCC Rules and RSS-210 of Industry Canada. These limits are designed to provide reasonable protection against harmful interference in a residential installation. This equipment generates, uses and can radiate radio frequency energy and, if not installed and used in accordance with the instructions, may cause harmful interference to radio communications. However, there is no guarantee that interference will not occur in a particular installation. If this equipment does cause harmful interference to radio or television

reception, which can be determined by turning the equipment off and on, the user is encouraged to try to correct the interference by one or more of the following measures:

- Reorient or relocate the receiving antenna.
- Increase the separation between the equipment and receiver.
- Connect the equipment into an outlet on a circuit different from that to which the receiver is connected.
- Consult the dealer or an experienced radio/TV technician for help.

Changes or modifications made to this equipment not expressly approved by Sennheiser electronic Corp. may void FCC authorization to operate this equipment.

CAN ICES-3 (B)/NMB-3(B)


RF Radiation Exposure Information

Since the radiated output power of this device is far below the FCC / IC radio frequency exposure limits, it is not subjected to routine RF exposure evaluation as per Section 2.1093 of the FCC rules and RSS-102 of Industry Canada.

This device meets FCC/ IC RF exposure guidelines for an uncontrolled environment. The transmitter of this device should be installed and operated at least 20 cm away from the user’s body. Use of other accessories not verified by the manufacturer may not ensure compliance with FCC / IC RF exposure guidelines.

This transmitter must not be co-located or operated in conjunction with any other antenna or transmitter.

In compliance with:

USA	 FCC ID: DMORS03ABUS
Canada	IC: 2099A-TR120II CAN ICES-3 (B)/NMB-3(B)

Caractéristiques techniques / Specifications / Technische Daten

Généralités / General / Allgemein

Plage de fréquences / Frequency range / Frequenzbereich	926.15 MHz – 927.55 MHz
Nombre de canaux / No. of channels / Anzahl der Kanäle	3

Émetteur TR 135 / Transmitter / Sender

Modulation / Modulation / Modulationsart	FM, stereo
Alimentation / Power supply / Stromversorgung	i/p: 100-240 V AC, 50-60 Hz, 0.1 A o/p: 9 V DC, 0.34 A, 3.06 W
Consommation de courant / Power consumption / Stromverbrauch	< 1.8 VA
Rapport signal/bruit / Signal-to-noise ratio / Geräuschpegelabstand	> 65 dBA
Connecteur / Connector / Anschlussstecker	RCA phono plug / 3.5 mm / 6.3 mm stereo
Poids / Weight / Gewicht	200 g
Dimensions / Dimensions / Abmessung	85 mm x 225 mm x 133 mm

Récepteur HDR 135 / Receiver / Empfänger

Transducteur / Transducer principle / Wandlerprinzip	open, dynamic
Couplage auriculaire / Ear coupling / Ankopplung an das Ohr	supraaural
Réponse en fréquence / Frequency response / Frequenzbereich	22 – 19,500 Hz
Impédance / Impedance / Impedanz	24 Ω
DHT / THD / Klirrfaktor	< 0.7 % at 1 kHz, 100 dB SPL
NPA / SPL / Schalldruckpegel	106 dB at 1 kHz, 1 V _{rms}
Alimentation / Power supply / Stromversorgung	2 AAA batteries
Autonomie / Operating time / Betriebszeit	approx. 20 hrs.
Poids / Weight / Gewicht	230 g



Sennheiser electronic GmbH & Co. KG

Am Labor 1, 30900 Wedemark, Germany

www.sennheiser.com

Publ. 06/15, 560041/A02