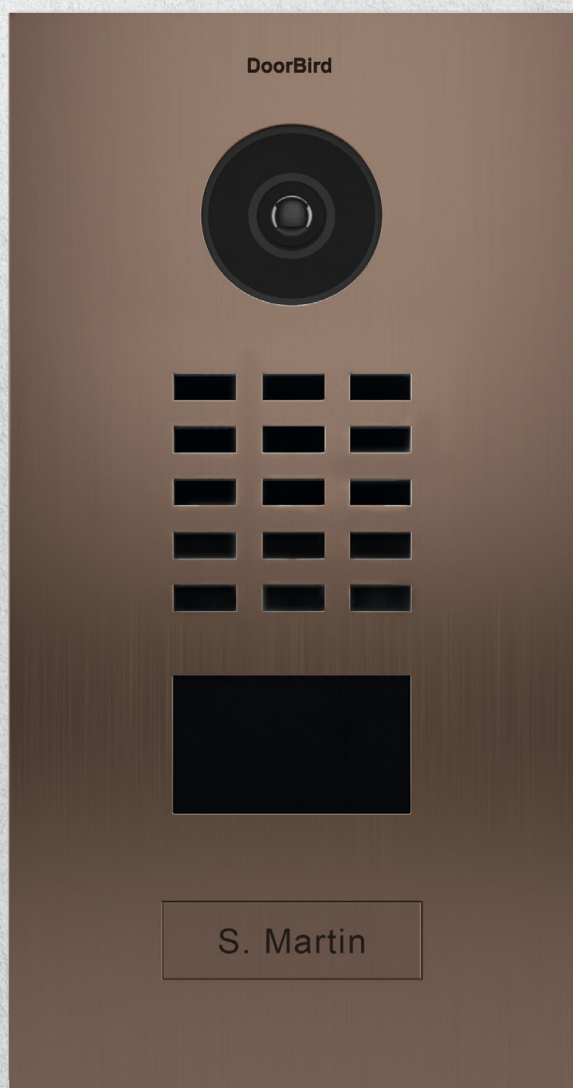




DoorBird
Technology meets Design.



D2101BV

IP VIDEO DOOR STATION

Brushed Stainless Steel • Bronze-Finish • 1 Call button

Designed,
developed and
made in Germany

TECHNICAL SPECIFICATIONS



DoorBird
Technology meets Design.

GENERAL

Front panel	Brushed stainless steel, Bronze-Finish, 3 mm (0.12 in)
Mounting housing (backbox)	Stainless steel
Mounting type	Flush-mounted, surface-mounting housing sold separately
Call button	Plastic. Engraveable metal cover plate sold separately, see www.doorbird.com/buy
Nameplate	Illuminated
Power supply	15 V DC or Power over Ethernet (PoE 802.3af Mode-A)
Weight	1577 g
Connectors	<ul style="list-style-type: none"> • RJ45, for LAN/PoE • Bi-stable latching relay #1, max. 1-24 V DC/V AC, 1 Ampere, e.g. for electric door opener • Bi-stable latching relay #2, max. 1-24 V DC/V AC, 1 Ampere, e.g. for electric door opener • Switch relay, max. 1-24 V DC / V AC, 1 ampere, e.g. for conventional door chime • External input (potential-free), for external door opener button • 15 V DC input (+, -)
Weather-proof	Yes, IP65
Approvals	CE, IC, FCC, RoHS, IP65
Dimensions	253 x 131 x 48.75 mm (H x W x D) 9.96 x 5.16 x 1.92 in (H x W x D)
Operating conditions	-25 to +55°C / -13 to 131°F Humidity 10 to 85 % RH (non condensing)
Scope of delivery	1 x Main Electrical Unit 1 x Front panel 1 x Mounting housing (backbox) 1 x Power supply unit (mains adaptor) with four country-specific adaptors (110 - 240 V AC to 15 V DC) 1 x RFID key fob 1 x RFID card 1 x Small parts 1 x Installation manual
EAN	4260423860742
Warranty	see www.doorbird.com/warranty

CURRENT SYSTEM REQUIREMENTS

	Mobile device: Newest iOS on iPhone/iPad, newest Android on Smartphone/Tablet
System requirements	Internet: High-Speed Landline Broadband Internet connection, DSL, cable or fiber optic, no socks or proxy server
	Network: Ethernet Network, with DHCP
Recommended installation height	Camera lens should be at a min. height of 125 cm (49 in)

VIDEO

Camera	HDTV 720p, dynamic (VGA - HDTV)
Lens	High-end ultra wide-angle hemispheric lens 180° horizontal, 90° vertical, straightened, IR-capable
Night-vision	Yes, light sensor, automatic IR-cut filter, 12 IR-LEDs (850 nm)

AUDIO

Audio components	Speaker and microphone, echo and noise cancellation (AEC, ANR)
Audio streaming	Two-way, full duplex

NETWORK

Ethernet	RJ45 jack, PoE 802.3af Mode-A
----------	-------------------------------

MOTION SENSOR

Type	Active
Detection angle	110°
Range	1 - 10 m (3.3 - 32.9 ft), depends on environment, configurable in 1 m (3.3 ft) steps.
Technology	4D. Based on multiple integrated sensors and algorithms, e.g. Radio Frequency Energy (RFE)
Configuration	Via App, e.g. <ul style="list-style-type: none"> • Range (1.10 m / 3.3 - 32.9 ft) • Movement direction (coming, leaving, both) • Individual events (e.g. switch a relay, push notification, SIP call [audio/video], HTTP(s) notification) • Individual schedules

RFID

Type	Active Reader Passive Tag (ARPT) system
Standard	ISO/IEC 18000-2:2009 Part 2
Frequency	125 KHz
Range	0 - 3 cm, depends on environment
Antenna	Internal
Compatible Transponder	Sold separately, see www.doorbird.com/buy

Configuration	Via app, e.g. <ul style="list-style-type: none"> • Tag (add, delete) • Individual events (e.g. switch a relay, push notification, SIP call [audio/video], HTTP(s) notification) • Individual schedules
---------------	---

INTEGRATED WIRELESS MODULES

RFID	125 KHz
Sensor	24 GHz, can be disabled

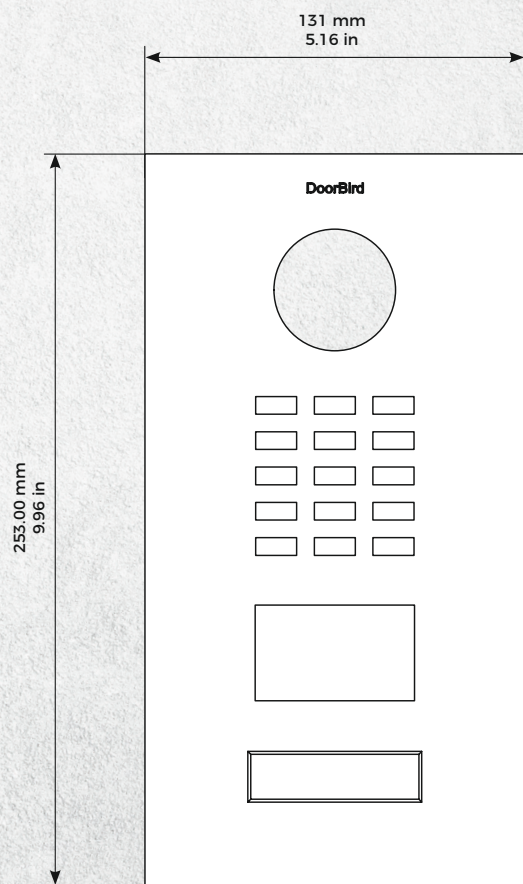
OPTIONAL ACCESSORIES

Sold separately	see www.doorbird.com/buy
-----------------	--

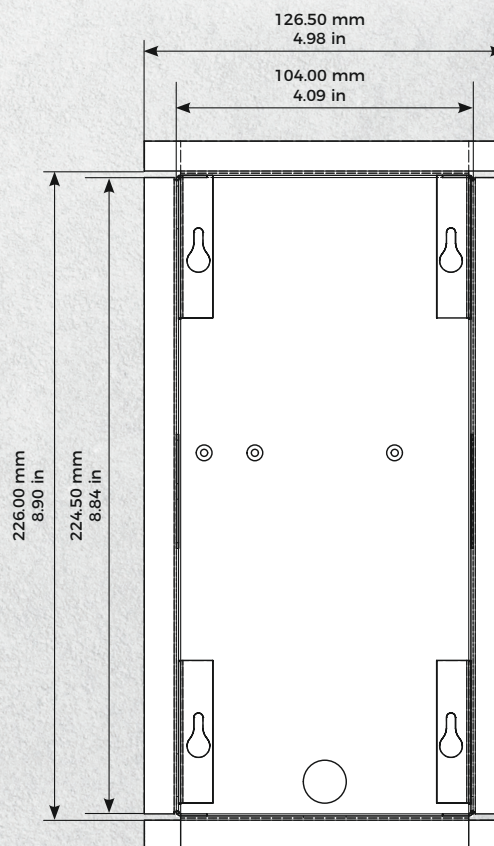
Special remarks:
Assembly requires professional skills or a technician.



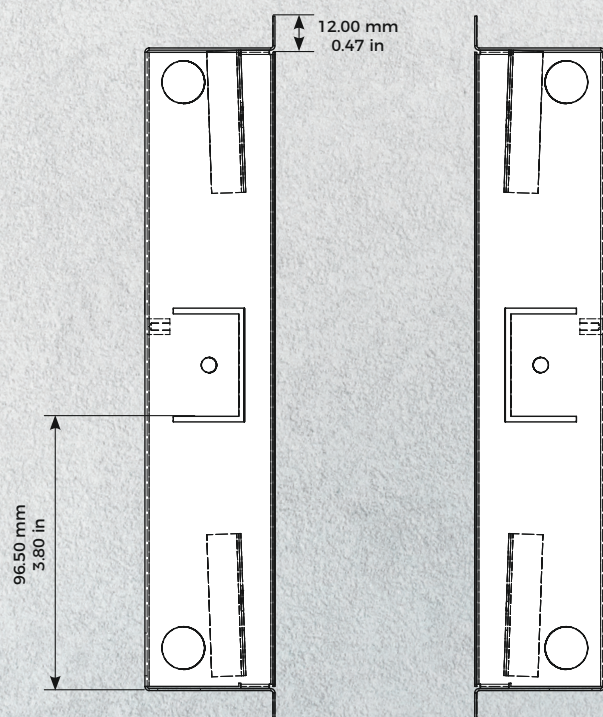
Front panel material thickness: 3.0 mm (0.12 in)



Front panel

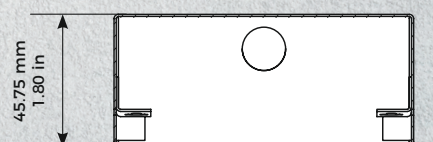


Mounting housing



Mounting housing

Mounting housing



Mounting housing