

Mixing Amplifier

MA-103



Mixing Amplifier

MA-103



OVERVIEW

The MA-103 is a compact mixing amplifier that requires BGM and voice amplification in lecture halls, training centers, restaurants, cafes, etc. It can be used conveniently in a small space due to adaptation of high efficiency digital amplifier circuit. It has high reliability, low weight and low heat generation, also can use MIC, LINE input according to any type of application. It is a device that implements various additional features such as tone control, TEL IN and priority function in a compact size.

FEATURE

Compact Design

Half rack size compact design and function provide ease of installation

Digital Amplifier Circuit

30W rated power of high efficiency digital amplifier circuit guarantees high reliability, low weight, and low heat.

SMPS Power Supply Circuit

Stable SMPS (Switching Mode Power Supply) circuit provides low power consumption and low weight.

Various Inputs and Additional Functions

3 channels various (3.5mm 3P EURO input, 6.3 Φ and 3.5 Φ Phone Jack, RCA cable) inputs are available. TEL IN and priority function is also provided.

Tone Control Function

Depending on the frequency used, there are treble and bass controllers to adjust the tone to suit your surroundings and purpose. (At 300Hz and 10kHz, each adjustable ± 10 dB)

Priority Broadcast Function

Priority broadcasting function is adopted which can control other input signals by input signal of TEL IN and INPUT 1. (TEL IN >> INPUT 1 >> INPUT 2 = INPUT 3)

MA-103 FRONT PANEL



1. Input Volume Control

Separate volume controller for INPUT 1, 2, and 3

2. Tone Volume

Tone control volume of TREBLE (10kHz) and BASS (300Hz) Frequency level is adjustable up to $\pm 8\text{dB}$.

3. Amplifier Protect Circuit Status LED

Status LED indicating amplifier's protection mode. When protection mode is operated, LED light is on and the output will be shut off.

4. AUX 3.5Φ Phone Jack Input Terminal

Unbalanced input terminal connecting external devices. The phone or MP3 player can be connected with AUX terminal.

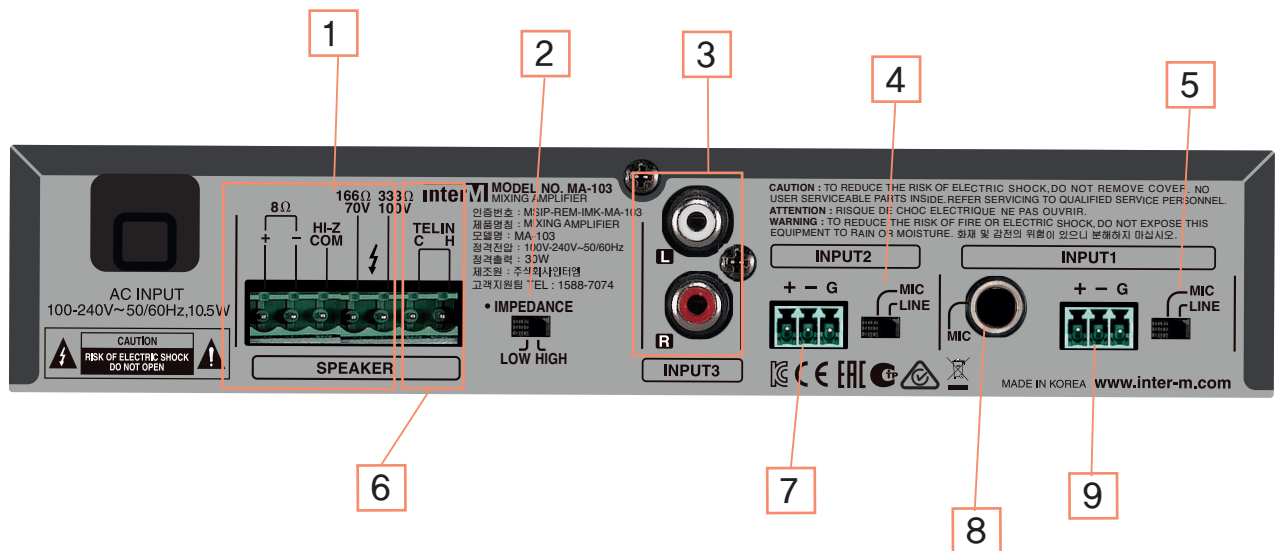
5. Main Volume Control

Volume will be increased if the control goes clockwise.

6. Power Switch

Green LED will be on if the device turn on normally.

MA-103 REAR PANEL



1. Speaker Output Terminal

※How to Connect

When you connect speaker, please detach power cord from the outlet first. Then connect speaker using speaker terminals at rear panel by <Pic 1>.

2. Impedance Select Switch

3. INPUT 3 (RCA input)

4. LINE / MIC Input Terminal and Input Select Switch (INPUT 2)

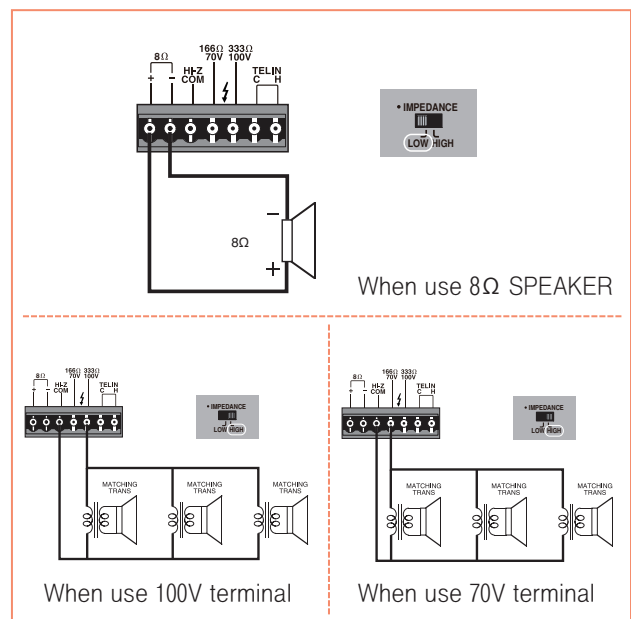
5. LINE / MIC Input Terminal and Input Select Switch (INPUT 1)

6. TEL IN Input Terminal

7. INPUT 2 Input Terminal (3P EURO)

8. INPUT 1 MIC Input Terminal (6.3Φ Phone Jack, Balanced)

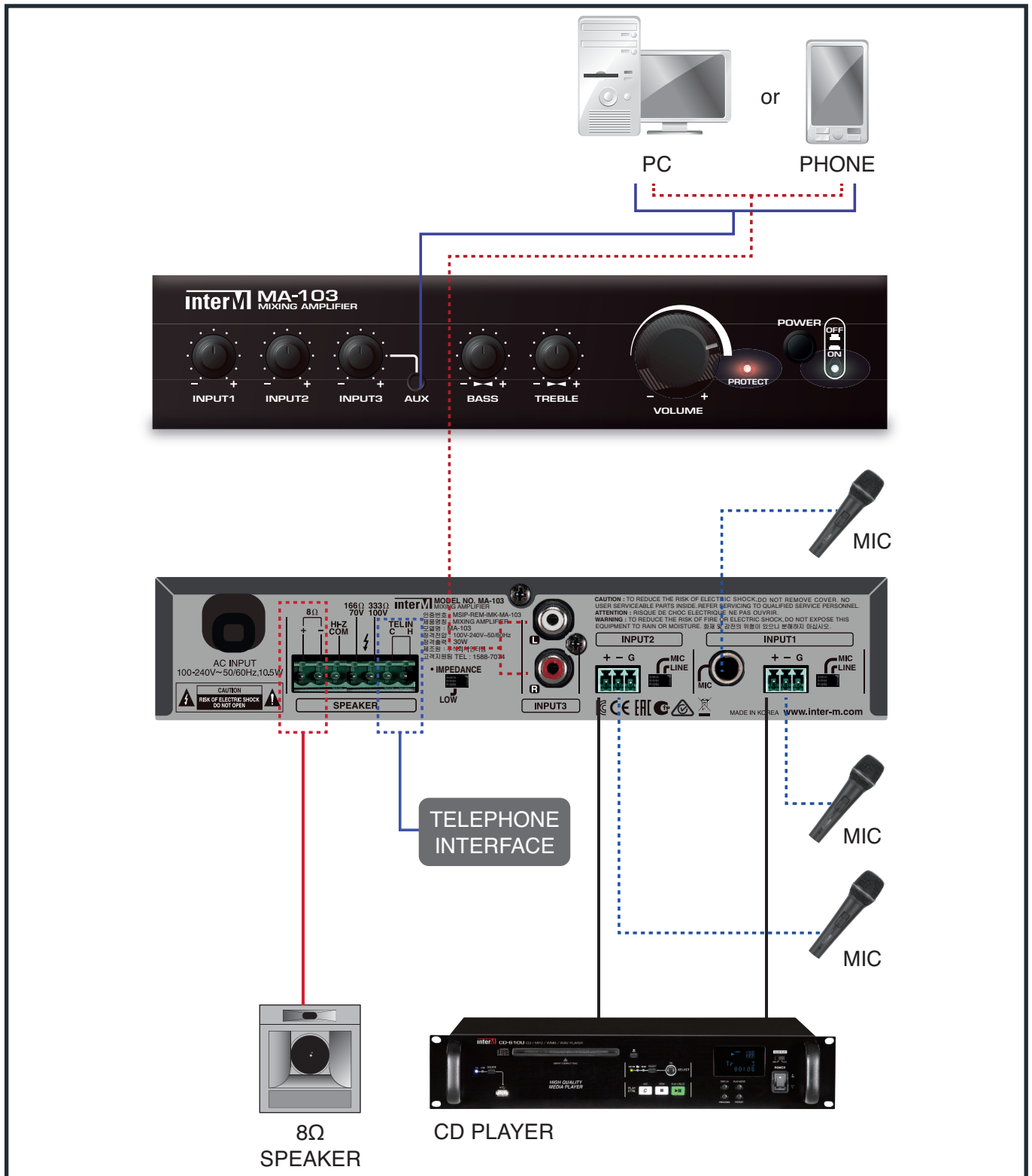
9. Input 1 Input Terminal (3P EURO)



<Pic 1>

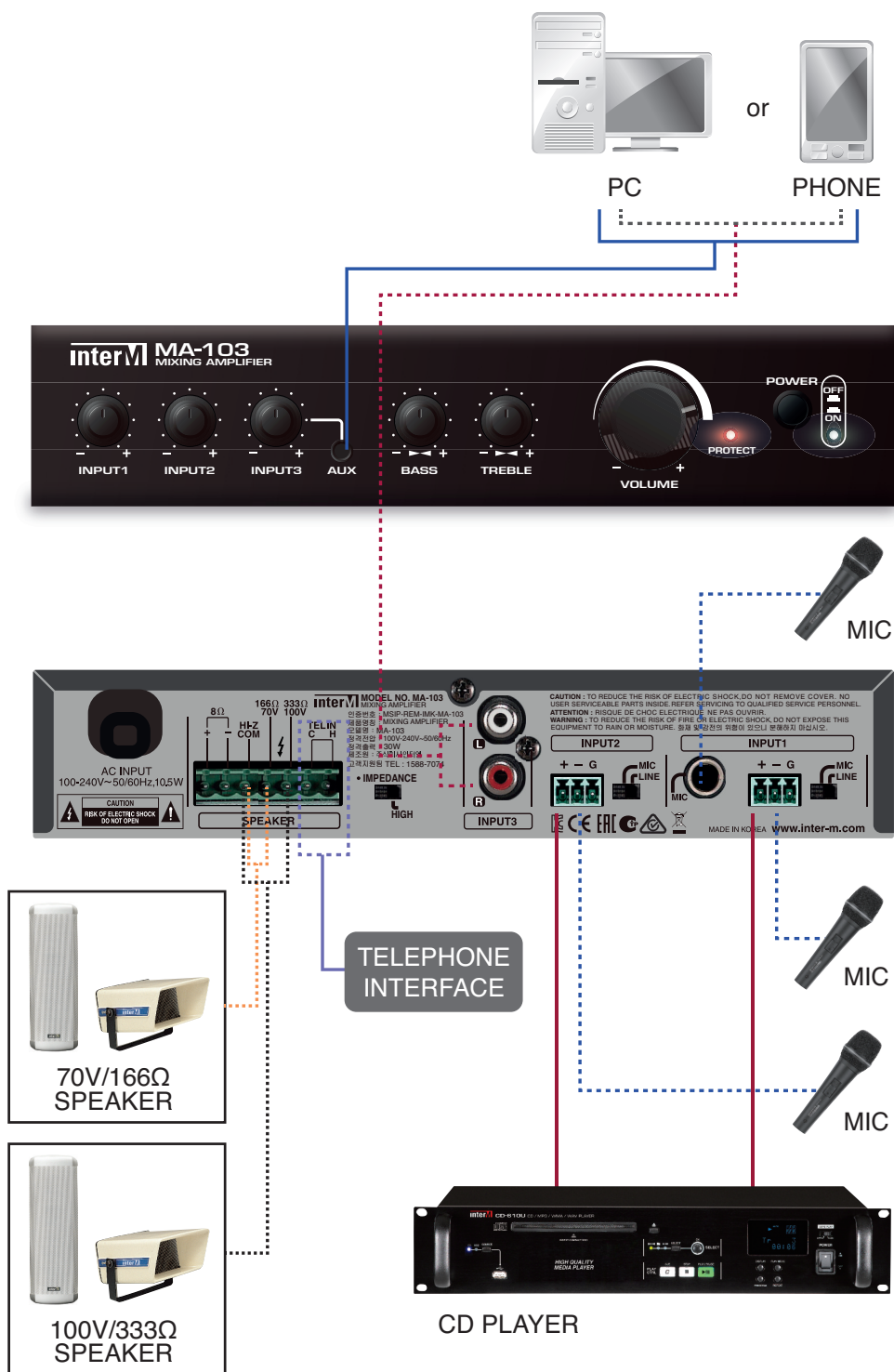
MA-103 INSTALLATION

When Connecting LOW IMPEDANCE SPEAKER



MA-103 CONNECTING METHOD

When connecting HIGH IMPEDANCE SPEAKER



MA-103 APPLICATION



APPLICATIONS IN SMALL-SIZED VENUE

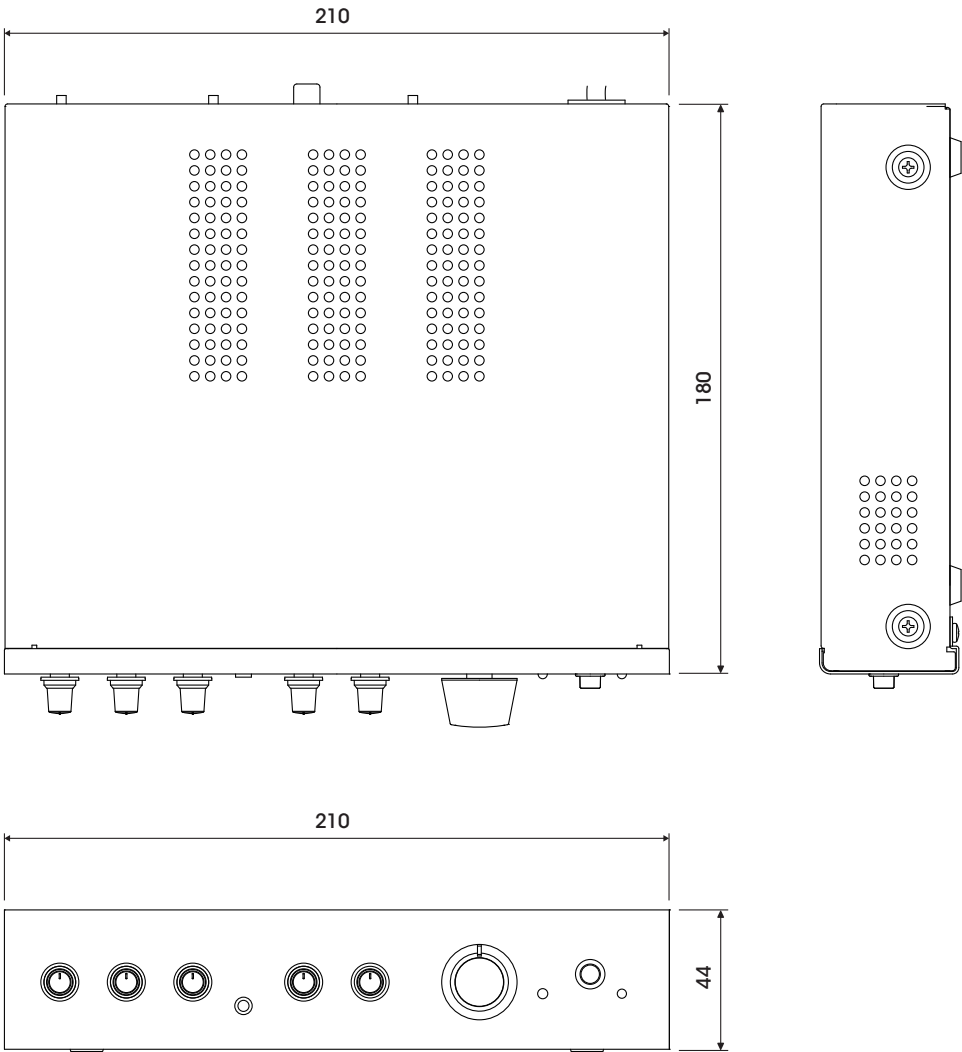
Compact 1U-sized mixing amplifier MA-103 perfectly suits for portable applications such as promotion events in small sized venues. Three audio input terminals are provided for BGM broadcast and broadcasting mixed sound sources can be easily done. AUX terminal in front panel allows users to simply utilize phone and MP3 as sound sources.

- AUDIO (MIC/LINE)
- AUDIO (LOW/HIGH-Z)



MA-103

OUTLINE DRAWING



MA-103 SPECIFICATION

		MA-103
Rated Power		30W
Input Sensitivity / Impedance		15.5V/8Ω, 70V/166Ω, 100V/333Ω
LOW Impedance	MIC (BALANCE)	-60dBu/2kΩ
	LINE (BALANCE)	-15dBu/2kΩ
	RCA (UNBALANCE)	-15dBu/20kΩ
	3.5Φ PHONE JACK (UNBALANCE)	-15dBu/2kΩ
	TEL IN	0dBu/5kΩ
Frequency Response		200Hz ~ 18kHz
LOW Impedance MIC Frequency Response		200Hz ~ 13kHz
Total Harmonic Distortion		Less than 0.5 %
S/N Ratio	MIC	More than 55dB
	LINE, TEL IN	More than 75dB
	RCA, 3.5Φ PHONE JACK	More than 75dB
Tone Control	BASS (300Hz)	±10dB
	TREBLE (10kHz)	±10dB
Operation Temperature		-10°C ~ +40°C
Power Supply		AC 100 ~ 240V, 50/60Hz
Power Consumption		10.5W (1/8W)
Weight (Set)		1.5kg/3.31lb
Dimension (Set)		210(W) x 44(H) x 180(D) mm 8.27 x 1.73 x 7.09 in

※ The appearance and specifications of this product may be changed without prior notice to improve the quality of the product.

NOTE



NOTE



Inter-M Corp. (IMK)



719, Dobong-ro, Dobong-gu, Seoul, Korea
Overseas Sales Team

Tel_ +82-2-2289-8141~7 Fax_ +82-2-2289-8149 E-mail_ overseas@inter-m.com

www.inter-m.com

※ Design and specification are subject to be changed for the improvement of product quality without pre notice.

2017. 1. V1